

CODE ZERO STAGE I FLOW MAP

¹ STAGE I CRITERIA

In order to initiate the Code Zero procedure, the following conditions must be met and for which expeditious resolution is not possible. It is acknowledged that the acuity and volumes in the Emergency Department could influence the conditions and that not all criteria may be required to be met in order to initiate the Code Zero Procedure.

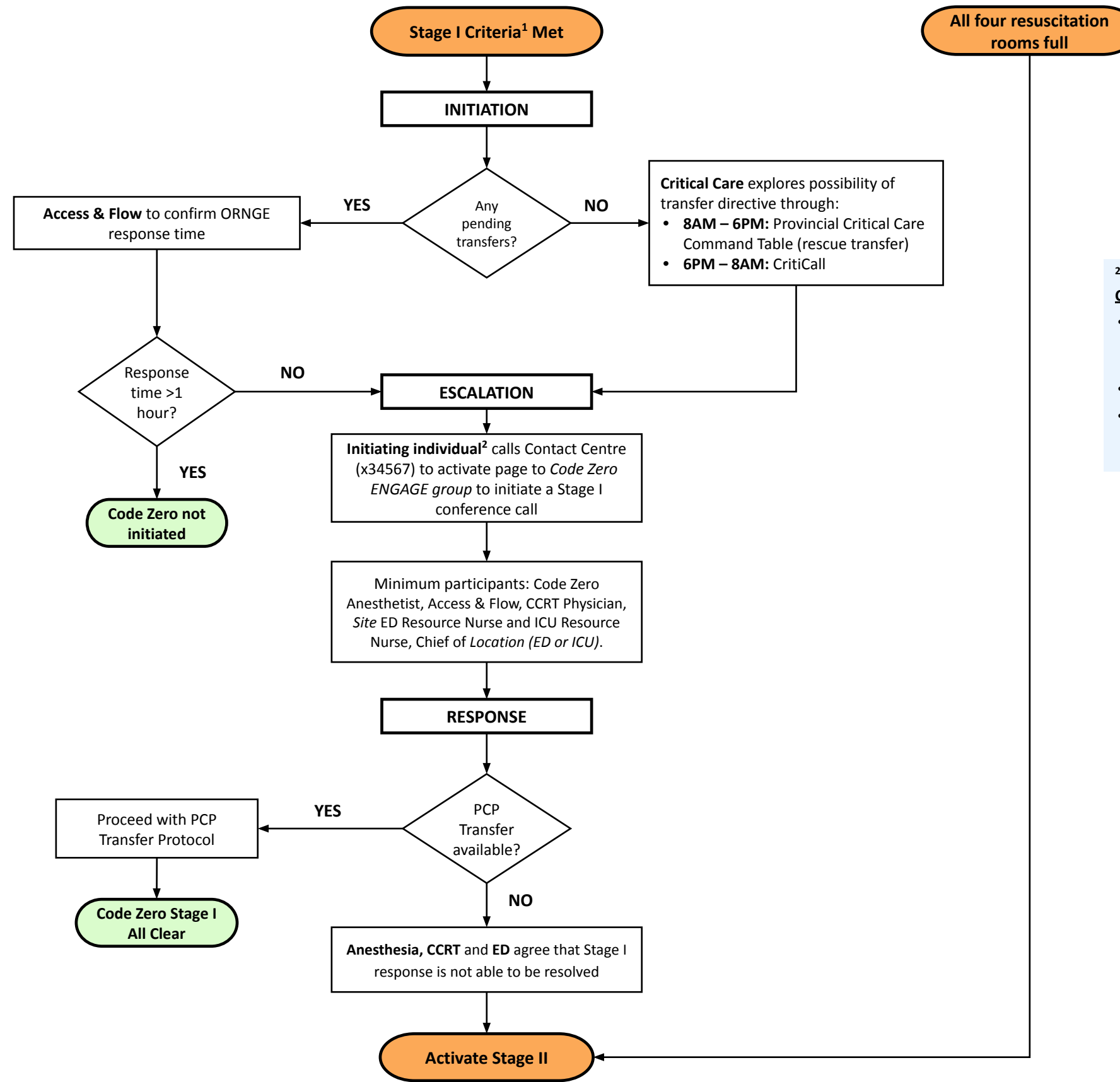
Stage I:

Emergency Department:

- Three of four resuscitation areas must be occupied by critically ill patients (e.g. ventilated) and who require ongoing aerosol-generating medical procedures, mechanical ventilation, or complex resuscitative care.
- All acute and subacute rooms occupied by patients who cannot be moved to a hallway bed (either because of isolation concerns or illness acuity).
- The acuity and volume within the emergency department is viewed to be very high in the judgement of the on-duty acute emergency physician and the resource nurse, such that the team is overwhelmed with existing resources and patient safety is at risk.

Critical Care:

- All immediately available options within the corporate critical care platform have been exhausted, explored by the Critical Care Resource Nurse, Critical Care Response Team Physician, and Access and Flow Leader.



² Any of the individuals below may initiate a Code Zero procedure:

- The on-duty acute care emergency physician in close collaboration and agreement with the emergency resource nurse
- On-site Access & Flow Leader
- The Critical Care Response Team (CCRT) physician in collaboration with the ICU Resource Nurse

CODE ZERO STAGE II FLOW MAP

³ STAGE II CRITERIA

- Stage I criteria met and no ORNGE or Primary Care Paramedic (PCP) transfer available within 60 minutes (i.e. Stage I was not resolved); or
- All four resuscitation rooms full

⁵ Patient Criteria for Management in non-traditional critical care setting (OR)

- 14 years or older
- Intubated **or** on a high-flow nasal cannula (HFNC)
- Established vascular access (central line or minimum 2 large bore peripheral IV)
- Admitted under the intensivist

⁴ Code Zero Response Team:

- Code Zero Anesthesiologist
- Anesthesia Assistant
- On-duty Access & Flow
- Critical Care Response Team Physician
- Designated Anesthesiologist + OR team
- Dedicated Sodexo Porterage
- RT

